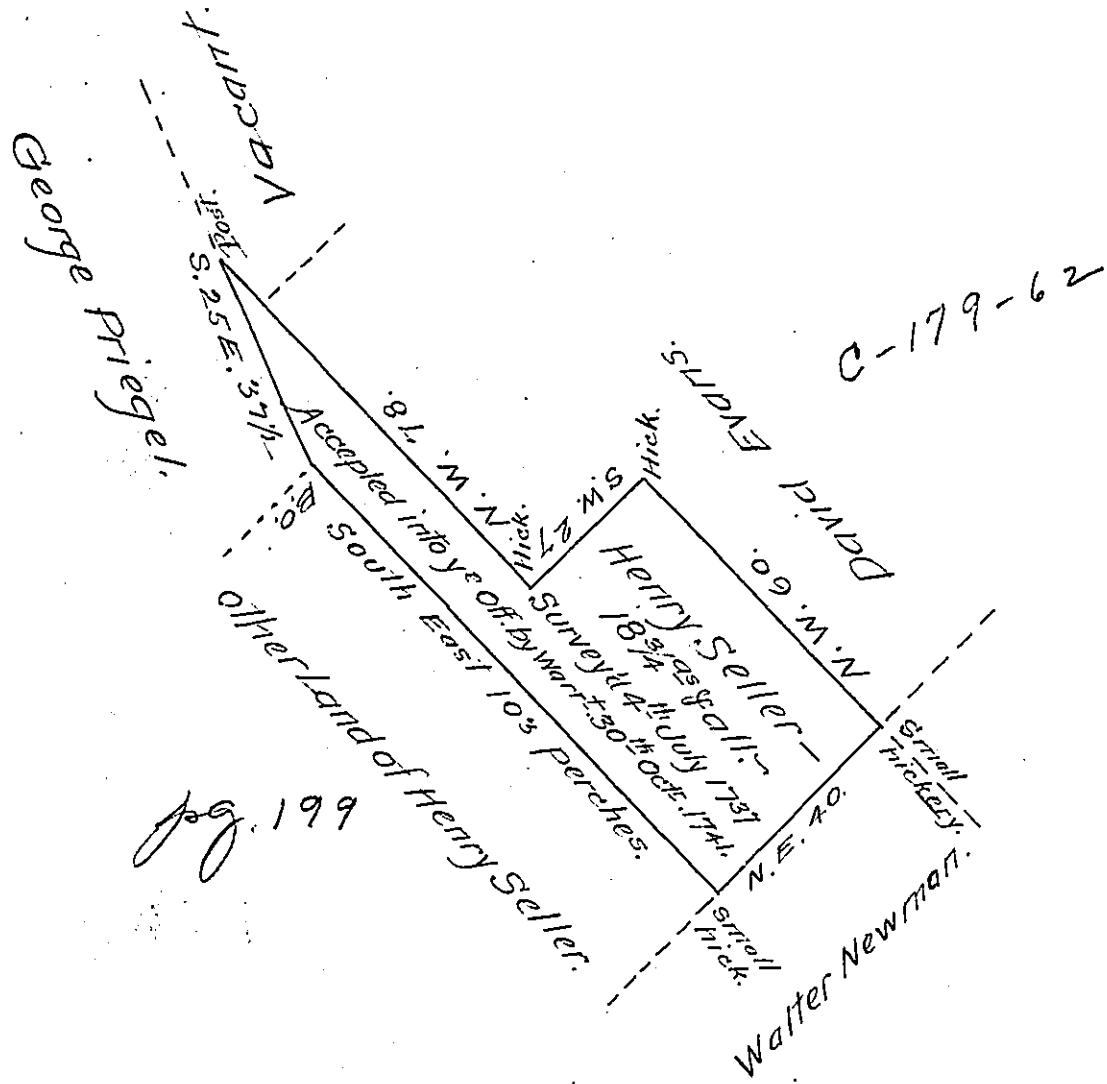


C154-287



The above Tract of Land situate in Heidleberg—in the County of Lancaster was by Consent of the Proprietaries Surveyed unto Henry Seller Jr. the 4<sup>th</sup> July 1741.

J<sup>r</sup> W<sup>m</sup> Parsons.

IN TESTIMONY that the above is a copy of the original remaining on file in the Department of Internal Affairs of Pennsylvania, made conformably to an Act of Assembly approved the 16th day of February, 1833, I have hereunto set my Hand and caused the Seal of said Department to be affixed at Harrisburg, this Twentieth day of September 1906.

*Geo. N. Johnson*  
Secretary of Internal Affairs.